

SIX TYPES OF CLAMP-ON ULTRASONIC FLOWMETER

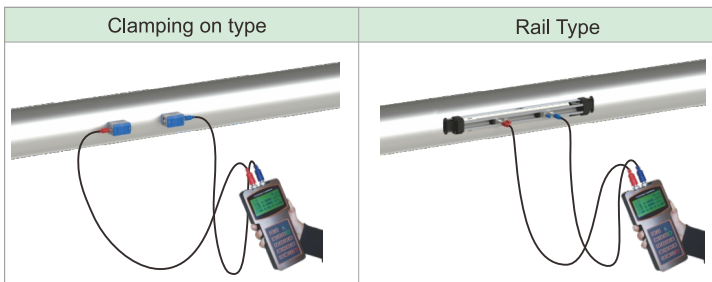
The Clamp-on ultrasonic flow meter realizes the non-contact measurement of the liquid flow. The sensor is installed on the outer wall of the pipeline to complete the flow measurement. It has the characteristics of small size, convenient carrying and accurate measurement.

THE CLAMP-ON SENSOR IS INSTALLED ON THE SURFACE OF THE PIPE,
AND DIFFERENT SENSORS ARE SELECTED TO ADAPT TO THE CALIBER DN15~DN6000



1 Hanheld ultrasonic flow meter

The handheld ultrasonic flowmeter is easy to carry and can be carried with you in a suitcase.

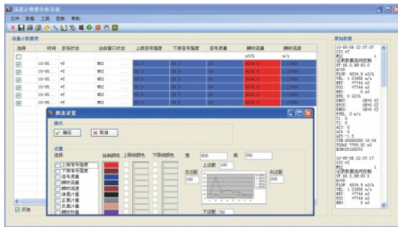


Transducers Used For Different Pipe Size:

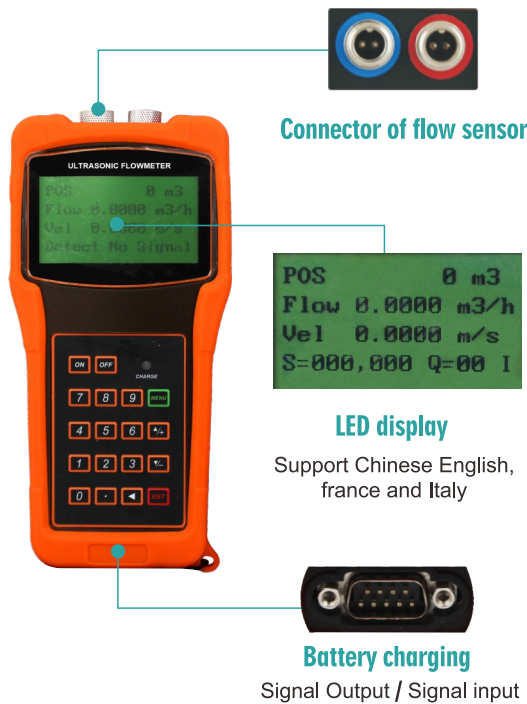
Types	Picture	Size	Model	Measuring range	Temperature
Standard		Small	TS-2	DN15~DN100	-30~90°C
		Medium	TM-1	DN50 ~DN700	-30~90°C
		Large	TL-1	DN300~DN6000	-30~90°C
High Temp		Small	TS-2-HT	DN15~DN100	-30~160°C
		Medium	TM-1-HT	DN50 ~DN700	-30~160°C
		Large	TL-1-HT	DN300~DN6000	-30~160°C
Rail type		Small	HS	DN15~DN100	-30~90°C
		Medium	HM	DN50~DN300	-30 ~90°C
		Large	EB-1	DN300~DN700	-30~90°C
Rail type with high temp		Small	HS-HT	DN15~DN100	-30~160°C
		Medium	HM-HT	DN50~DN300	-30 ~160°C
		Large	EB-1-HT	DN300~DN700	-30~160°C

Spare Parts:

Built-in 32K memory



The built-in 32K memory can store up to 2000 lines of measurement data. the measurement data can be processed, including data analysis, report printing, flow curve making and other functions.



Connector of flow sensor

LED display

Support Chinese English, france and Italy

Battery charging

Signal Output / Signal input

Aluminum carrying case



Standard Delivery:

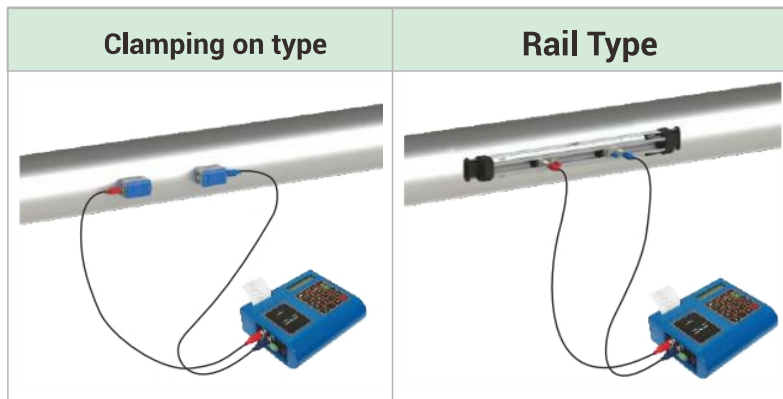
- 1 x Handheld Ultrasonic Flowmeter
- 2 x3 Types Transducer (with rail if ordered)
- 2 x 5 m connection cable
- 1 x 2GB SD card (optional)
- 1 x Integrated datalogger
- 1 x RS232 interface
- 1 x Pulse output
- 2 x Fastening chains
- 1 x Battery 1 + Charger
- 1 x House of protection
- 1 x tape measure
- 1 x Heavy duty aluminum carrying case
- 1 x Instructions manual

Specification:

	Handheld ultrasonic flow meter	Handheld ultrasonic energy meter
Accuracy	± 1%	± 2%
Tube diameter	DN15-DN6000	
Flow rate	0-±10m/s	
Turbidity	10000ppm, and the bubble content is small	
Medium Tep	-30-160°C	
Applicable pipes	Steel, stainless steel, copper, PVC, aluminum, fiberglass and other pipes. Lining is allowed.	
Signal Output	1 way OCT Output (pulse width 6-1000ms, default 200ms)	1 way 4~20mA output
Signal input		1 way OCT output
		1 circuit relay output
		3 way 4~20mA input
		2 way temperature messure
Data interface	RS232	RS485
Communication protocol	MODBUS,M-BUS,HART,ETC	
Display	LCD display	
Keyboard	16+2 Touch keyboard	
Data record	Built in 32MB memory	Thermal printerExternal SD card
Power supply	Rechargeable NI-MH batteries 2000mAH	
Work time	More than 12h	More than 20h

2 Portable ultrasonic flowmeter

The sensor is installed on the outer wall of the pipeline to complete the flow measurement. Convenient and accurate, built-in printer and SD card memory, can print the set measurement value instantly or regularly.



Transducers Used For Different Pipe Size:

Types	Picture	Size	Model	Measuring range	Temperature
Standard		Small	TS-2	DN15~DN100	-30~90°C
		Medium	TM-1	DN50 ~DN700	-30~90°C
		Large	TL-1	DN300~DN6000	-30~90°C
High Temp		Small	TS-2-HT	DN15~DN100	-30~160°C
		Medium	TM-1-HT	DN50 ~DN700	-30~160°C
		Large	TL-1-HT	DN300~DN6000	-30~160°C
Rail type		Small	HS	DN15~DN100	-30~90°C
		Medium	HM	DN50~DN300	-30~90°C
		Large	EB-1	DN300~DN700	-30~90°C
Rail type with high temp		Small	HS-HT	DN15~DN100	-30~160°C
		Medium	HM-HT	DN50~DN300	-30~160°C
		Large	EB-1-HT	DN300~DN700	-30~160°C

Spare Parts:

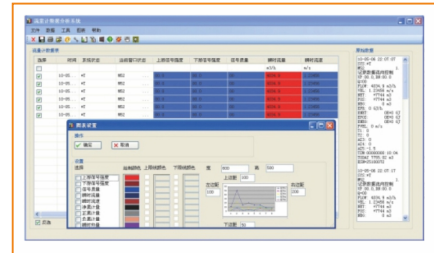


Printer



LED display

Support Chinese English, france and Italy



SD card data memory

For the mass storage of measurement data, the supporting measurement data analysis and statistics software can process the measurement data, including functions such as tabulation, statistics, data screening, data analysis, report printing, and flow curve generation.

Connection

Signal Output:4-20mA
Signal input:4-20mA
Communication:RS485



Standard Delivery :

- 1 x portable Ultrasonic Flowmeter
- 2 x 3Types Transducer (with rail if ordered)
- 2 x 5m connection cable
- 1 x SD card
- 1 x Integrated datalogger
- 1 x RS232 interface
- 1 x Pulse output
- 2 x Fastening chains
- 1 x Battery 1 + Charger
- 1 x House of protection
- 1 x tape measure
- 1 x Heavy duty aluminum carrying case
- 1 x Instructions manual



Rail Type



Clamping on type

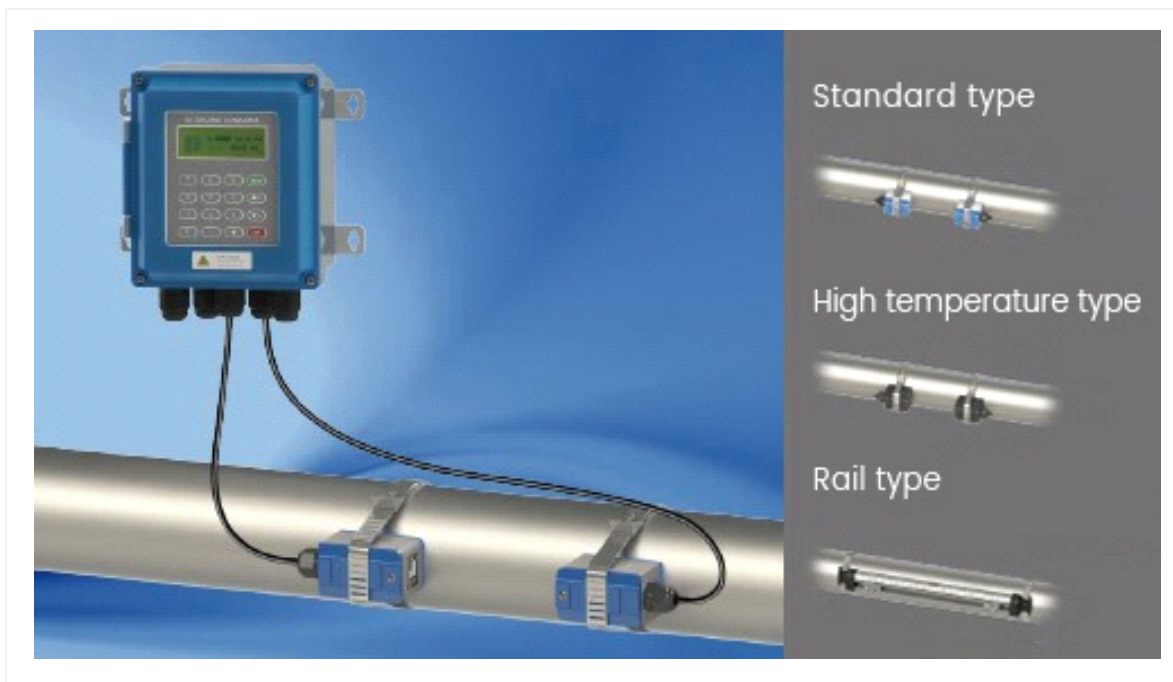
Category	Portable ultrasonic flowmeter
Accuracy	flow $\pm 1\%$, heat $\pm 2\%$
Tube diameter	DN15-DN6000
Flow rate	0- ± 10 m/s
Measuring medium temperature	-30-160°C
Turbidity	10000ppm, and the bubble content is small
Applicable pipes	Steel, stainless steel, copper, PVC, aluminum, fiberglass and other pipes. Lining is allowed.
Signal Output	1 way 4~20mA output
Signal input	1 way OCT output 1 circuit relay output 3 way 4~20mA input 2 way temperature messure
Data interface	RS485
Communication protocol	MODBUS,M-BUS,HART,ETC
Display	LCD display
Keyboard	16+2 Touch keyboard
Data record	Thermal printer External SD card
Power supply	Rechargeable NI-MH batteries 2000mAH

3 Wall Mounted Ultrasonic Flowmeter

Wall Mounted Clamp-on Ultrasonic Flowmeter can be installed on the wall, instrument box, distribution box, and the protection level of the host reaches IP67.



Installation:



Parameters:

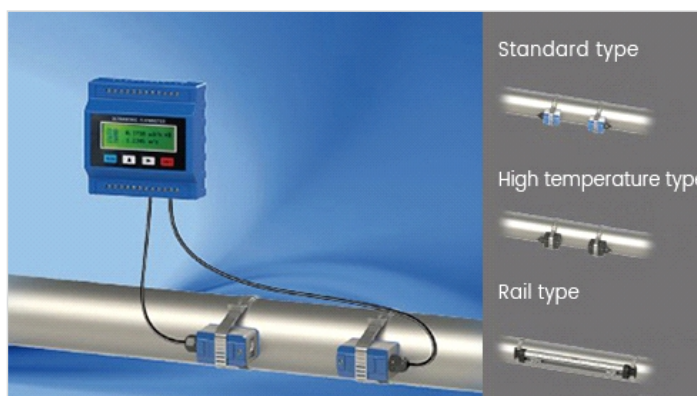
Flow range	0-12m/s
Applicable caliber	DN15~DN6000
Display	2*20 backlit LCD(Chinese and English optional)
Power supply mode	220VAC/8~36VDC
Power consumption	Operating current is 50mA
Accuracy	± 1%
Operating	4*4 tactile keypad
Protection level	Mainframe:IP65, transducer:IP:68
Communication	RS485 Modbus RTU Interface
Output	1x 4-20 mA ~ 1x impulsion ~ 1x relay
Inputs	3x 4-20 mA, qccuracy 0.1 % (acquisition of temperature, pressure)

Types Of Flow Transducers:

Flow transducer	Model	Measuring range	Temperature
Clamp on	TS-2(small)	DN25-DN100	-30°C~90°C
	TM-1(medium)	DN50-DN700	
	TL-1(large)	DN300-DN6000	
High temp Clamp on	TS-2-HT(small)	DN25-DN100	-30°C~160°C
	TM-1-HT(medium)	DN50-DN700	
	TL-1-HT(large)	DN300-DN6000	
Insertion	TC-1(standard)	DN50-DN6000	-30°C~160°C
	TC-2(extended)	DN50-DN6000	
	TP-1(parallel)	DN80-DN6000	
Inline	standard	DN15-DN1000	-30°C~160°C

4 Modular clamp-on ultrasonic flowmeter

The flow meter is small in size, full of functions, and low in price. It is installed on a guide rail and is suitable for batch use and installation in an instrument box or power distribution cabinet.



Parameters:

Flow range	0-12m/s
Applicable caliber	DN15~DN6000
Display	2*20 backlit LCD(Chinese and English optional)
Power supply mode	220VAC/8~36VDC
Power consumption	Operating current is 50mA
Accuracy	± 1%
Protection level	Mainframe:IP65, transducer:IP68
Communication	RS485 Modbus RTU Interface
Output	1x 4-20 mA ~ 1x impulsion ~ 1x relay
Inputs	3x 4-20 mA, accuracy 0.1 % (acquisition of temperature, pressure)

Types Of Flow Transducers:

Flow transducer	Model	Measuring range	Temperature
Clamp on	TS-2(small)	DN25-DN100	-30°C~90°C
	TM-1(medium)	DN50-DN700	
	TL-1(large)	DN300-DN6000	
High temp Clamp on	TS-2-HT(small)	DN25-DN100	-30°C~160°C
	TM-1-HT(medium)	DN50-DN700	
	TL-1-HT(large)	DN300-DN6000	
Insertion	TC-1(standard)	DN50-DN6000	-30°C~160°C
	TC-2(extended)	DN50-DN6000	
	TP-1(parallel)	DN80-DN6000	
Inline	Standard	DN15-DN1000	-30°C~160°C

5 Fixed Mounting ultrasonic flow meter

Fixed Mounting ultrasonic flow meter can be installed on the pipe line, the sensor can be installed clamp on, insertion and Inline.



Parameters:

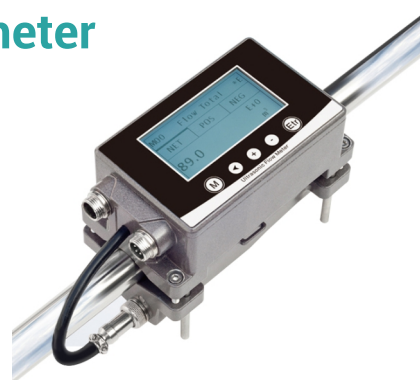
Flow range	0-12m/s
Applicable caliber	DN15~DN6000
Display	2*20 backlit LCD(Chinese and English optional)
Power supply mode	220VAC/8~36VDC
Power consumption	Operating current is 50mA
Accuracy	± 1%
Protection level	Mainframe:IP65, transducer:IP68
Communication	RS485 Modbus RTU Interface
Output	1x 4-20 mA ~ 1x impulsion ~ 1x relay
Inputs	3x 4-20 mA, qccuracy 0.1 % (acquisition of temperature, pressure)

Types Of Flow Transducers:

Flow transducer	Model	Measuring range	Temperature
Clamp on	TS-2(small)	DN25-DN100	-30°C~90°C
	TM-1(medium)	DN50-DN700	
	TL-1(large)	DN300-DN6000	
High temp Clamp on	TS-2-HT(small)	DN25-DN100	-30°C~160°C
	TM-1-HT(medium)	DN50-DN700	
	TL-1-HT(large)	DN300-DN6000	
Insertion	TC-1(standard)	DN50-DN6000	-30°C~160°C
	TC-2(extended)	DN50-DN6000	
	TP-1(parallel)	DN80-DN6000	
Inline	Standard	DN15-DN1000	-30°C~160°C

6 Compact clamp on ultrasonic flow meter

Compact clamp on ultrasonic flowmeter is applicable to DN15~DN40 small diameter metal pipes and resin pipes, stainless steel, iron, copper, PVC and other materials.



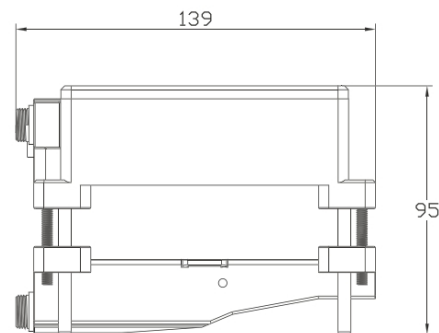
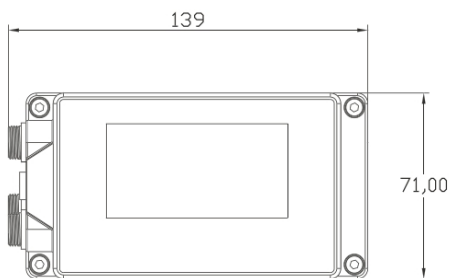
Technical Data:

Nominal Dia (mm)	DN 15~DN 40
Accuracy	±2%,±1% Optional
Velocity	0.1 - 5 m/s
Display	256*128 LCD
Display Unit	Standard Unit in M3, Litre
Process Temperature	32°F~167°F(0°C~75°C)
Data Storage	over 10 years,data read/write frequency:over 1 million times
Sensor Protection Class	IP65
Pipes	Copper, Plastic, Steel, Iron, Stainless Steel.etc
Output	Std. 4 – 20 mA.OCT(pulse)/One relay alarm (please contact the factory)
Communication	Modbus RS485
Power supply	10-24V VDC
Environment temperature	-10 to 60°C (No freezing)
Cable length	2m(standard), PT1000 sensor standard cable length is 9m

Technical Data:

Nominal Dia (mm)	DN 15~DN 40
Accuracy	±2%,±1% Optional
Velocity	0.1 - 5 m/s
Display	256*128 LCD
Display Unit	Standard Unit in M3, Litre
Process Temperature	32°F~167°F(0°C~75°C)
Data Storage	over 10 years,data read/write frequency:over 1 million times
Sensor Protection Class	IP65
Pipes	Copper, Plastic, Steel, Iron, Stainless Steel.etc
Output	Std. 4 – 20 mA.OCT(pulse)/One relay alarm (please contact the factory)
Communication	Modbus RS485
Power supply	10-24V VDC
Environment temperature	-10 to 60°C (No freezing)
Cable length	2m(standard), PT1000 sensor standard cable length is 9m

Size Drawing (Unit: mm)



Ultrasonic energy /BTU meter

